

# ASME JAPAN SECTION



*SETTING THE STANDARD*

---

## ANNUAL MEETING

Tokyo, June 26, 2009

The High Pressure Gas Safety Institute of Japan (KHK)

# AGENDA

1. Annual Reports from Board Members
  - Membership
  - Activity Report
  - Award Recipient and New Fellows
2. Activity Plan 2009–10
3. Board Members for 2008–2010

Invited Lecture by  
Mr. Yasuhiro Ootori

# Membership as of May, 2009

## Outside of U.S.

India (4)	632
Japan (1)	537
United Kingdom	521
Peru (2)	501
Australia (6)	262
Colombia (5)	223
Italy (9)	210
South Korea	209
Singapore (10+)	206
Hong Kong (10+)	175

## Global View

U.S.	74,807
ASIA & PACIFIC RIM	2,647
EUROPE	2,180
LATIN AMERICA & CARIB.	1,602
MIDDLE EAST & AFRICA	716
<b>GRAND TOTAL</b>	<b>81,952</b>

# Activity Report in 2008–09

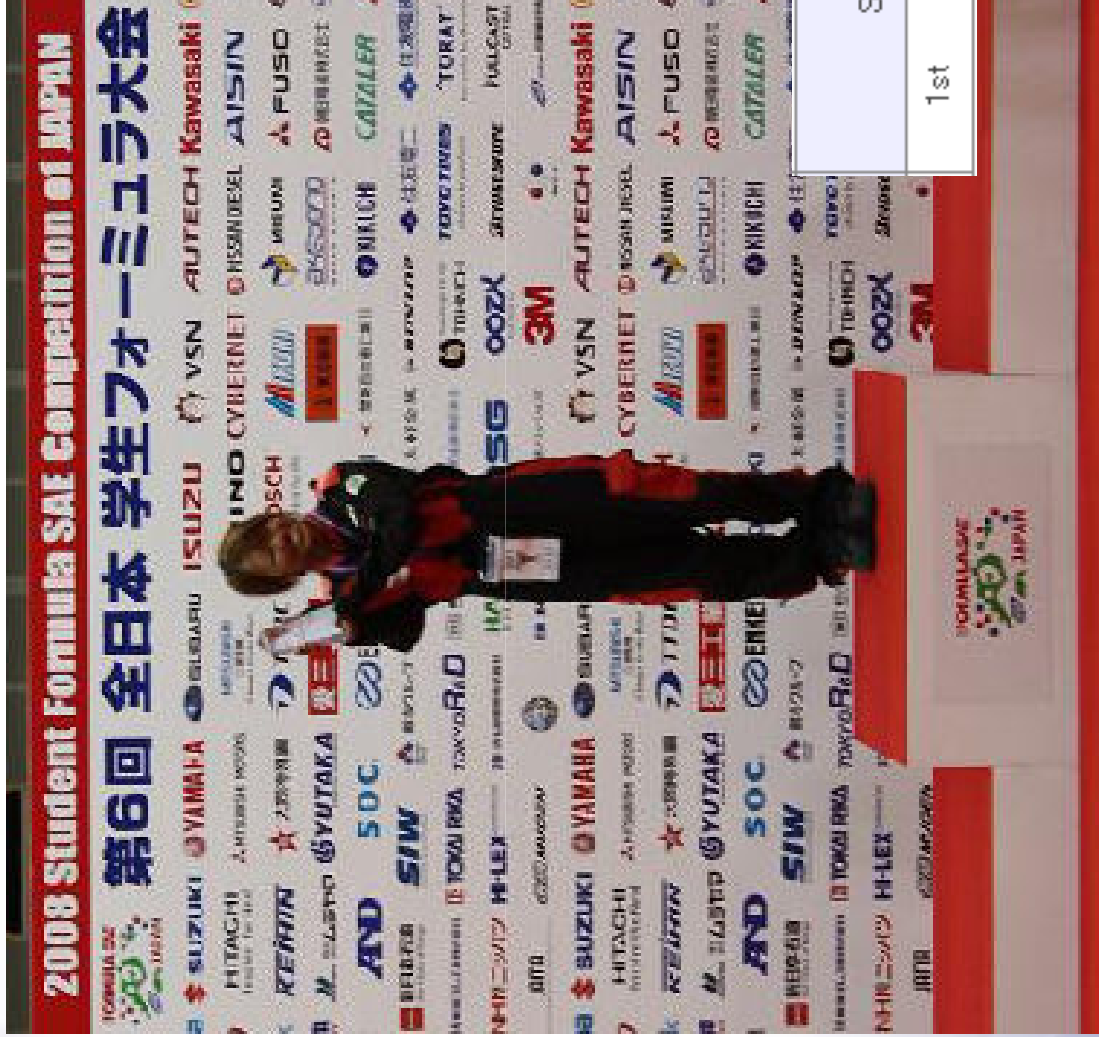
1. Sponsored The Student Formula SAE Competition of Japan
2. Asia-Pacific District Operating Board Meeting (APDOB)
3. District Distinguished Speakers Series in District G
4. Special Lectures
5. Section Web Page
6. Financial Report

# Sponsored The Student Formula SAE Competition of Japan



2008 the 6th Competition Sep.10 to Sep.13 at ECOPA (Ogasayama Sports Park)

# ASME JAPAN AWARD – Kyoto University



ASME Japan Award	
Sponsored by : ASME Japan	
1st	Kyoto University



# ASME JAPAN AWARD – Kyoto University



ASME Japan Award was given to the team governed with the most excellent management.

7

## 3rd ASME DISTRICT G (ASIA-PACIFIC) OPERATING BOARD MEETING Tokyo, Japan, September 19 – 20, 2008

Present:

Kok Chuan (KC) Toh	Singapore	District Leader and Chair, AP-DOB
Vojislav Ilic	Australia	Chair (Honors & Awards) and Section Chair
Henry Ho	Hong Kong	Section Chair
Fu-Cheng Wang	Taiwan	Representing Section
Usman Bin Younos	Pakistan	Chair (Students & ECE Matters) and Sec. Secretary Gen.
Henry Wong	Singapore	Section Chair
Natteri M. Sudharsan	India	Correspondent
Fawad Kiramat	Pakistan	District G SSC Student Rep
Tom Libertiny	USA	Managing Director (K & C)
Hieu Nguyen	USA	ASME Staff
Lynden Davis	USA	ASME Staff
Susan Ipri Brown	Japan	
Makoto Sato	Japan	Section Chair
Wataru Nakayama	Japan	Section Vice Chair
Masaru Ishizuka	Japan	Section Vice Chair
Kazuaki Yazawa	Japan	Section Vice Chair
Kenji Oyamada	Japan	Section Secretary
Hiroshi Shinohara	Japan	Section Auditor
Takayasu Tahara	Japan	



# Asia-Pacific District Operating Board



*Standing:* H. Won, K. Oyamada, H. Shinohara, M. Ishizuka, K. Yazawa, N.M. Sudharsan ,  
L. Davis, H. Ho, FC. Wang,; *Sitting:* F. Kiramat, V. Ilic, T. Lieritny (VP,GCOB), H. Nguyen,  
U.B. Younos, KC Toh, M. Sato

# Minutes of APDOB Meeting

- Updates from ASME
- Asia-Pacific Engineering Education Congress (APEEC)
- Report on Status of District G
- Reports from Sections
- Formation of new Sections and sub-Sections
- Communications and Membership
- Unit Support and Operations
- Awards and Recognition
- Nomination of Next District Leader
- Update on International Student and ECE Matters
- Humanitarian Shelter Student Design Contest 2
- Student Matters and Early Career Engineers

District Distinguished Speakers Series in District G  
in Sydney (Nov. 26) and Hong Kong ( Nov. 29, 2008)  
“New Trends and Standards for Pressure Vessels”  
by Dr. Takayasu Tahara



Dr. Tahara presenting the seminar in Sydney, Australia

# Special Lecture

## “Corrugated Tabs for Supersonic Jet Control”

By: Professor E. Rathakrishnan  
Indian Institute of Technology Kanpur

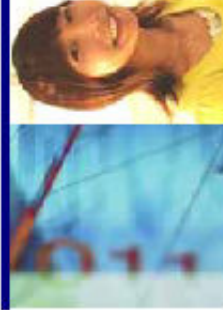
India

(June 6, 2009)

At Tokyo Denki University



American Society of Mechanical Engineers  
JAPAN Section



**Welcome to ASME Japan Section**  
ASME Founded in 1880 as the American Society of Mechanical Engineers, today's ASME promotes the art, science & practice of mechanical & multidisciplinary engineering and allied sciences around the globe.

- [Home](#)
- [Announcements](#)
- [Board Members](#)
- [Newsletters](#)
- [Events](#)

**Minutes of the Board Meeting**

20th Anniversary of ASME Japan Section

**2028 Vision for Mechanical Engineering**



**Vision and Mission**

- To promote technical and professional development of ASME members residing or visiting the Japan section area, through meetings and other forms of communication, by encouraging members to prepare or discuss papers, through practicing of local engineering issues, and through close coordination with the ASME Japan.
- To achieve closer personal acquaintance and spirit of cooperation among engineers.
- To provide for cooperation with other local engineering societies in matters of common interest.
- To assist in furthering the purposes of ASME Japan.



*New weight sensors can show when bins are running out of inventory, and plug directly into a network or PC using a standard USB connection.*



**Contacts :**

mhtml: http://asmejp.did-co.com/home20081007.mht

2009/06/26

# ANNUAL FINANCIAL REPORT

July 1, 2008 to June 30, 2009

<b>Revenue</b>		
<i>Allocation</i>	Yen	289,565
<i>Section Donation</i>	Yen	126,243
<i>Interest</i>	Yen	2,030
<i>Balance brought forward</i>	Yen	1,754,738
<b>Total Revenue</b>	<b>Yen</b>	<b>2,172,576</b>
<b>Expenditures</b>		
<i>Supporting Student Event</i>	Yen	1000,000
<i>Speaker/Meeting Expenses</i>	Yen	30,000
<i>3<sup>rd</sup> APDOB</i>	Yen	47,056
<i>Annual Meeting Party (no shows)</i>	Yen	4,000
<i>Bank Charge</i>	Yen	18,100
<i>Miscellaneous</i>	Yen	4,508
<b>Total Expenditures</b>	<b>Yen</b>	<b>203,664</b>
<b>Balance</b>	<b>Yen</b>	<b>1,968,912</b>

# Activity Plans in 2009–10

1. To inaugurate  
1st ASME English Presentation Competition  
for Japanese Students and Young Engineers  
(July 28, 2009 in Tokyo)
2. To sponsor  
The Student Formula SAE Competition of  
Japan.  
(Sep 9 to 12, 2009 in Shizuoka Pref.)

1st ASME English Presentation Competition for  
Japanese Students and Young Engineers  
(July 28, 2009 at Nihon University)

- **Objects:** To give the opportunities of making presentation in English for Japanese Students and Young Engineers
- **Formality:** Start with selected presenters and public invitation from the second year (2010)
- **This year:** 8 graduate students will make 15 minutes presentation and will answer to questions.
- **Certificate:** All participants will be awarded with a certificate and the best presentation will be awarded also.





In recognition of the excellent presentation in

*1st ASME English Presentation Competition for  
Japanese Students and Young Engineers*

This citation is awarded to

*Ichiro Suzuki*

Who prepared the presentation of the topic in his research  
and made an excellent presentation on July 28, 2009  
at Nihon University in Tokyo

CHAIR

SECRETARY



# ANNUAL BUDGET

July 1, 2009 to June 30, 2010

<b>Revenue</b>		
<i>Allocation</i>	Yen	300,000
<i>Section Donation</i>	Yen	100,000
<i>Interest</i>	Yen	2,000
<i>Balance brought forward</i>	Yen	<u>1,968,912</u>
<b>Total Revenue</b>	<b>Yen</b>	<b>2,370,912</b>
<b>Expenditures</b>		
<i>Supporting Student Event</i>	Yen	100,000
<i>Speaker/Meeting Expenses</i>	Yen	30,000
<i>Bank Charge</i>	Yen	15,000
<i>Miscellaneous</i>	Yen	<u>5,000</u>
<b>Total Expenditures</b>	<b>Yen</b>	<b>150,000</b>
<b>Balance</b>	<b>Yen</b>	<b><u>2,520,912</u></b>

# RUTH AND JOEL SPIRA OUTSTANDING DESIGN EDUCATOR AWARD

## Kosuke Ishii

For significant contributions to engineering design education through innovation in the structure and presentation of the Stanford Design for Manufacturability course series, used as a model for courses in many other institutions; and for the instruction of doctoral students who transfer the philosophy to others.

The Ruth and Joel Spira Outstanding Design Educator Award was established as a division award in 1998. The Award was elevated to a Society award in 2001 to recognize a person who exemplifies the best in furthering engineering design education through vision, interactions with students and industry, scholarship and impact on the next generation of engineers, and a person whose action serves as a role model for other educators to emulate.



Stanford Report, March 11, 2009

# Kosuke Ishii, known for teaching manufacturing design, is dead at 51

BY CHELSEA ANNE YOUNG

Kosuke Ishii, a professor of mechanical engineering known for his dedication to teaching, died on March 2 at Good Samaritan Hospital in Los Gatos. He was 51 years old. Ishii's death, the result of internal hemorrhaging from burst blood vessels in his esophagus, came as a shock to his friends, family and co-workers.

As director of the Manufacturing Modeling Laboratory (MML), Ishii was interested in improving the design and manufacturability of products ranging from airplanes to water pumps.

"Kos made strong connections with all the people who worked with him and learned from him," said MML lab member and doctoral candidate Whitfield Fowler. "Personally, Kos helped to shape the opportunities that I will have for the rest of my life."



20

# *Soichiro Honda Medal*



The Soichiro Honda Medal recognizes an individual for an outstanding achievement or a series of significant engineering contributions in developing improvements in the field of personal transportation.

Attention shall be concentrated on the brilliance of the achievement or on the overall effect of a series of contributions-- not on the individual. The achievement should be of such public importance as to be worthy of the gratitude of society and to call forth the admiration of engineers.

As a result of a generous unrestricted donation to ASME by Honda Motor Company, Ltd., in 1980, the Society established the Soichiro Honda Medal in recognition of Mr. Honda's exemplary achievements in the field of personal transportation in 1982.

# New Fellow in 2008



## Yoshihiro Tomita , PHD – 2008

Professor Yoshihiro Tomita has made pioneering and seminal contributions in solid mechanics, particularly in the areas of large elastic-plastic deformation, finite element analysis, computational modeling of various kinds of plastic instabilities and its application to the estimation of forming/failure limit. With his insightful and broad knowledge in modeling, he has made major contributions in understanding characteristic length scaled dependent phenomena, phase transformation and mechanics of polymer blends. Tomita has received numerous awards for his works with a special symposium held in his honor during USNACTAM2002. He is an internationally renowned leader in solid mechanics with distinguished national and international services including serving as the Presidential Japanese Society of Materials Science SMS and Head of the Computational Mechanics Division of the Japanese Society of Mechanical Engineers and international service as an editorial board member of leading journals. Osaka University, Osaka, Japan, Ph.D. 1973 Mechanical Engineering

# New Fellow in 2008 (Cont' d)



## Minami Yoda, PHD – 2008

Professor Yoda has been a leader in developing and applying new optical diagnostic techniques to understand fundamental fluid mechanics problems. She was among the first to use tomographic planar-laser induced fluorescence to elucidate the large-scale three-dimensional structure in turbulent jets. She is also known for her work in microfluidics, where she has introduced an evanescent wave-based particle-image velocimetry technique to measure velocities within the first 400 nm next to the wall. Dr. Yoda has been a faculty member at the Georgia Institute of Technology since 1995, and has been an Associate Editor of Experiments in Fluids since 2003. She has published more than 45 journal papers and given numerous invited conference and keynote presentations. Dr. Yoda has been a member of the Executive Committees of the American Physical Society Division of Fluid Dynamics and the American Nuclear Society Fusion Energy Division, and was a member of the Defense Science Study Group of the Institute for Defense Analyses. Stanford University, Ph.D. 1993 Aeronautics and Astronautics

# New Fellow in 2009



## Shuichi Fukuda, Dr.Eng. – 2009

Shuichi Fukuda's contributions to design engineering include 39 books (4 English, 1 Korean), 106 journal papers, and 27 awards (ASME CIA Honorable Mention, CIE Best Paper, etc.). His welding support system is a pioneering work and the parallel parking support system developed by his team won the Gold Medal in the Lincoln Foundation National Design Contest, followed by the Bronze the following year. He was Chair, Japan Section, held YEF in Japan twice, and served for Asia Pacific sub-region, Region XIII. He has hosted many conferences and delivered many keynotes in Japan, Brazil, Ireland, India, U.S., etc. Dr.Eng. (1972), University of Tokyo



## New Fellow in 2009 (Cont' d)



### Hiroshi Hayami, PHD – 2009

Throughout his professional career, Prof. Hayami has made two major contributions to our technical community. He proposed and developed a low-solidity-vanes diffuser concept for transonic centrifugal compressor. The concept has been validated and used widely in industry. The concept enhances stability margin without penalty in efficiency. Secondly, he developed a unique method in applying PIV measurement technology in transonic centrifugal compressor. He was the first to measure complicated unsteady transonic flow field in high pressure ratio centrifugal compressors. His method is widely applied in Japanese industry. He has been very active in the IGTI/ASME as a technical committee member. Ph.D. (1976), Kyushu University





# ASME Japan News

Since 1988

February 2009

Memoriam Issue for Haruo Kozono who died on January 18, 2009



Haruo Kozono who was a Past Chair (1994-1996) of ASME Japan Section

## Contents

1. A kind of man who believes that nothing is impossible by Makoto Sato,  
Chair ASME Japan Section
2. In Memoriam: Haruo Kozono by Wataru Nakayama.
3. Recollections of Haruo Kozono by Testuo Tsukikawa



# Board Members for 2008–2010

Makoto SATO , (Chair)

Kenji OYAMADA, (Secretary)

Takuya SATO, (Deputy Secretary, Treasurer)

Yoshisuke HIGASHIDA, (Vice Chair, Membership)

Masaru ISHIZUKA, (Vice Chair, Academia Liaison)

Junjiro IWAMOTO, (Vice Chair, Academia Liaison)

Hirotake NAKAI,(Vice Chair, Professional Development)

Wataru NAKAYAMA, (Vice Chair, Activity Planning)

Takashi SHIINA, (Vice Chair, Industry Liaison,)

Rasoul AIVAZI, (Vice Chair, Webmaster)

Masahiro TAKEI, (Vice Chair, Academia Liaison)

Tetsuo TSUKIKAWA, (Vice Chair, Codes and Standards)

Hiroshi SHINOHARA, (Auditor)

**Invited Lecture by**

**Mr. Yasuhiro Ootori**

**Director, Sony Computer Entertainment**

**“Cooling Design of a Playstation 3”**